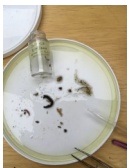


Salt Kill **Tuesday, August 14, 2018 1pm to 3pm** **(42.764731; -73.722992)**

Location: end of Romaine Rd, Residences of Lexington Hills, City of Cohoes

Local WAVE Coordinator: Nancy Heinzen

Participants: Ricardo Lopez-Torrijos; Kathleen Burns; Liam Burns; Terry Burns; Robyn Reynolds; Elijah Legault; Joe Corra; Sean Ward; Elijah Legault; Jordan Ries; Juliana Terrault; Jacob Sedgwick



Heinzen, Nancy

From: alene.onion@gmail.com
Sent: Monday, January 7, 2019 10:01 AM
To: Heinzen, Nancy
Subject: Your WAVE sample results

Nancy Heinzen,

I processed your WAVE sample today. Thank you for your contribution!
NA

Before I give you your sample results, I want to take a moment to talk about sampling effort. WAVErs in general are very meticulous about following the WAVE instructions and collecting the WAVE samples. This very likely includes you and I thank you for that. Some folks are disappointed, however, when the sample assessment is No Conclusion and the Izaak Walton League Score is only FAIR. PLEASE know that this is not necessarily a reflection of your skill or effort. It is an assessment of the stream's water quality and it means you likely found a stream with water quality conditions that are in the middle of the pack.

Don't hesitate to contact me if you have any questions about your sample.
Thank you!

Alene Onion
WAVE Coordinator, NYSDEC
625 Broadway, Albany, NY
email: alene.onion@dec.ny.us

Your WAVE results are as follows:

Stream: Salt Kill

Images: NA

Location: downstream of romaine rd. culvert near residences of lexington hills club houses

Coordinates: 42.764731,-73.722992

Collection Date: Tue Aug 14 2018 00:00:00 GMT-0400 (EDT)

Participants: Nany Heinzin, Ricardo Lopez-Torrijos; Kathleen Liam and Terry Burns, Elijah Legault, Jordan Ries, Juliana Terrault; Joseph Corra, Sean Ward, Jacob Sedgwick, Robyn Reynolds

Macroinvertebrate Sample:

Macroinvertebrates you identified on your datasheet: (Crustaceans)

Amphipoda,(Crustacea) Asellidae,(Coleoptera) psephenidae,(diptera) crane

fly,(Diptera) Chironomus,(Ephemeroptera) unknown,(Trichoptera) hydropsychidae,(worm like) hirudinea,(worm like)

turbellaria,,,,,,,, Macroinvertebrates I identified in your sample: (Coleoptera)

Psephenidae,(Diptera) Tipulidae,(Diptera) Chironomidae,(Crustacea)

Amphipoda,(Coleoptera) Elmidae,(Trichoptera) Philopotamidae,(Crustacea)

Asellidae,(Wormlike) Turbellaria,(Trichoptera)

Hydropsychidae,(Ephemeroptera) Baetidae

Assessment Results:

WAVE Assessment Result: No Conclusion

The NYS DEC will only consider the WAVE assessment and the visual data (including the User Perception Data and Habitat Assessment Data given below) to guide reporting and professional sampling. That being said, less robust analyses could be valuable for local purposes. With that in mind, I have also calculated the Izaak Walton League Assessment for your sample data for local purposes only:
Good

User Perception Data:

Primary Contact: d
Secondary Contact: d
Current Weather: sun
Weather past 24h: rain
Water Clarity: 7
Phytoplankton: 3
Periphyton: 3
Macrophytes: 3
Odor: 1
Trash: 1
Discharge Pipes: 1
Primary Deterrents: water clarity, other
Other: private development

Habitat Assessment Data:

Epifaunal substrate / available cover: b
Embeddedness: b
Velocity/Depth combinations: b
Sediment Deposition: a
Channel Flow Status: a
Channel Alteration: b
Frequency of Riffles: b
Bank Stability (Left): a, (Right): a
Bank Vegetation Protection (Left): b, (Right): b Riparian Vegetation Zone Width (Left): a, (Right): c