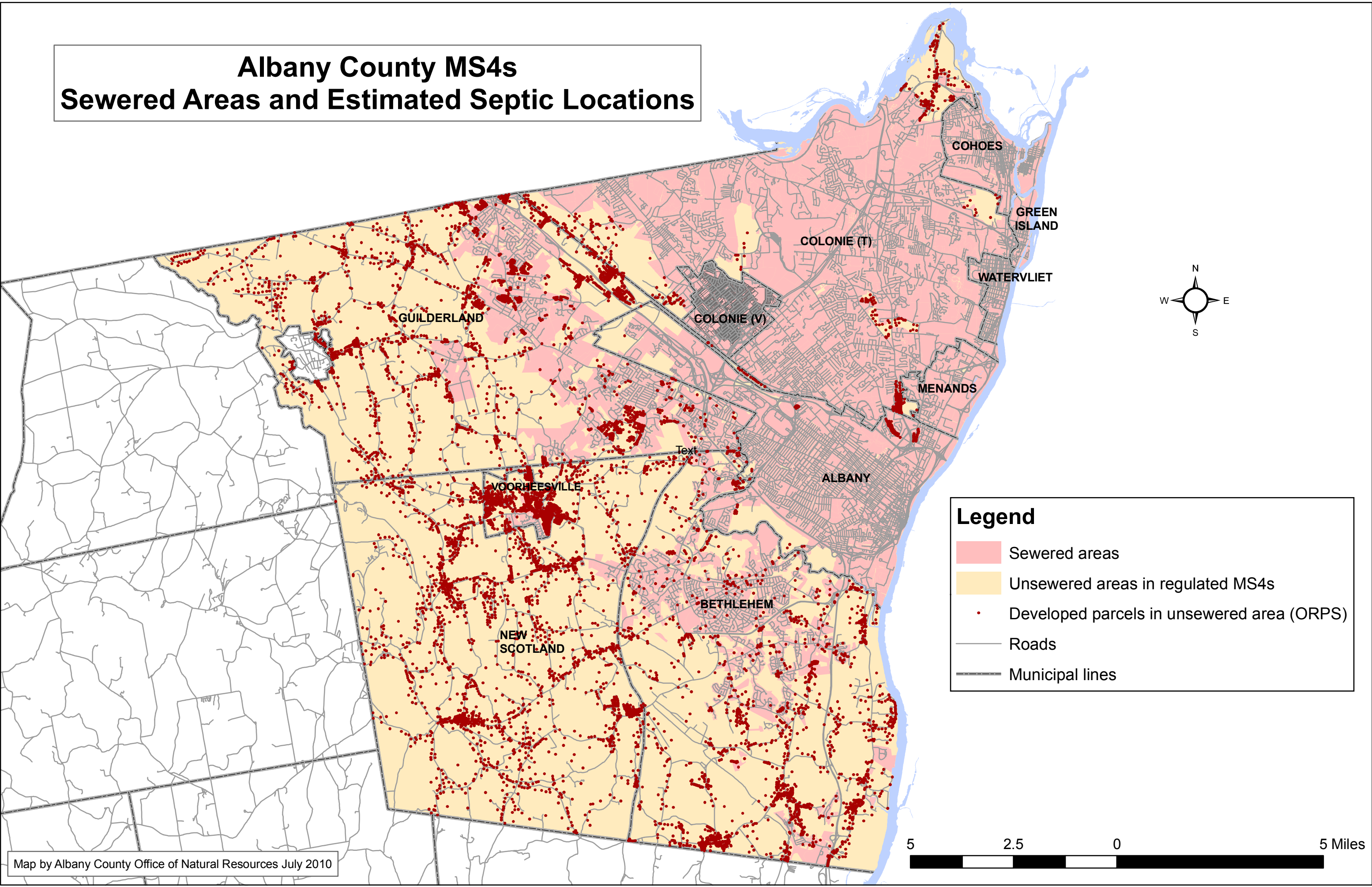


Albany County MS4s Sewered Areas and Estimated Septic Locations



**ESTIMATED # of SEPTIC SYSTEMS in UNSEWERED AREAS
OF REGULATED PHASE II MUNICIPALITIES
Albany County, New York
(As of July, 2010)**

A GIS Desktop Analysis

METADATA

One of the deliverables for the NYS DEC stormwater grant contract C303129 was to produce a map of the sewered and unsewered areas within the regulated Phase II municipalities and show the estimated locations of septic systems in the MS4 municipalities. The Albany County Office of Natural Resources (ONR) collected data, prepared coverages, and produced a map for this purpose. The following describes the data sources included in this map and the process by which the map was produced.

The following data were provided by municipalities and used to determine the sewered and unsewered areas of the regulated communities.

Town of Colonie – A polygon shapefile of general boundaries of populated areas of the town NOT served by public sewer. ONR overlaid and extracted parcel boundaries to determine sewered areas of the town.

Town of Bethlehem – Parcels polygon shapefile of sewer customers. The remainder of the parcels in the Town of Bethlehem not included in the coverage of sewer customers is shown as unsewered.

Town of Guilderland – Line shapefile of sewer line locations. ONR estimated the sewered area by choosing parcels within 50 feet of the sewer line. This appeared to capture most of the parcels with access to the public sewer. ONR made some adjustments to include and delete parcels that appeared to be selected in error. The Guilderland coverage is probably the least accurate.

Village of Voorheesville - .pdf of sewered parcels.

ONR produced a shapefile of sewered parcels based on the .pdf. Parcels not included in the sewer districts are shown as unsewered.

Town of New Scotland – polygon shapefile of sewer district. All parcels not included in the sewer district are shown as unsewered.

All final shapefiles showing areas of sewered and unsewered areas of the MS4s were delineated using 2010 parcel boundaries from Albany County Real Property Tax Services. All final shapefiles are in SP NAD 83.

To estimate the number and general location of septic systems in the unsewered areas of regulated MS4 communities ONR clipped the NYS ORPS 2009 point data to the unsewered area and selected out property tax codes that indicate developed land. It was inferred that developed land, as categorized, most likely has a septic system. The selected property tax codes include:

200s-residential
400s-commercial
600s-services
700s-industrial

Based on this methodology, as of July, 2010, there are an estimated 7543 septic systems located within the regulated Phase II municipalities of Albany County.