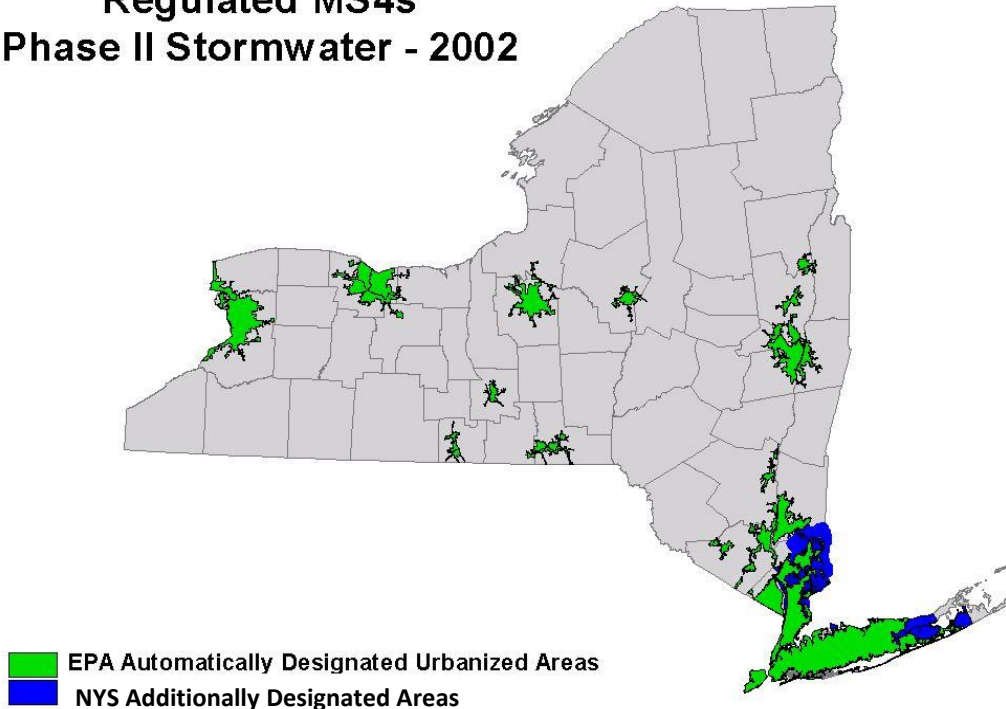


MS4 PERMIT

What is an “MS4”?

Regulated MS4s
Phase II Stormwater - 2002



- Publicly owned entity
- In urbanized area
- Owner-operator of separated storm system infrastructure
- Storm lines NOT combined with sanitary lines

Urbanized area = 1,000 people per square mile or more.

“MS4”- = **m**unicipal **S**eparated **S**tormwater **S**ewer **S**ystem.

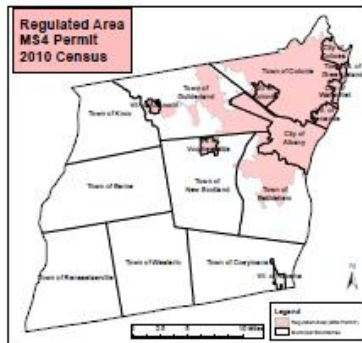
Regulated MS4 Area & "MS4" areas for County and Public University (Coalition Members)

Non-Traditional MS4 (University at Albany) and Traditional MS4-No land use control (Albany County)

*Map also used as Map 4 of the TAAW.

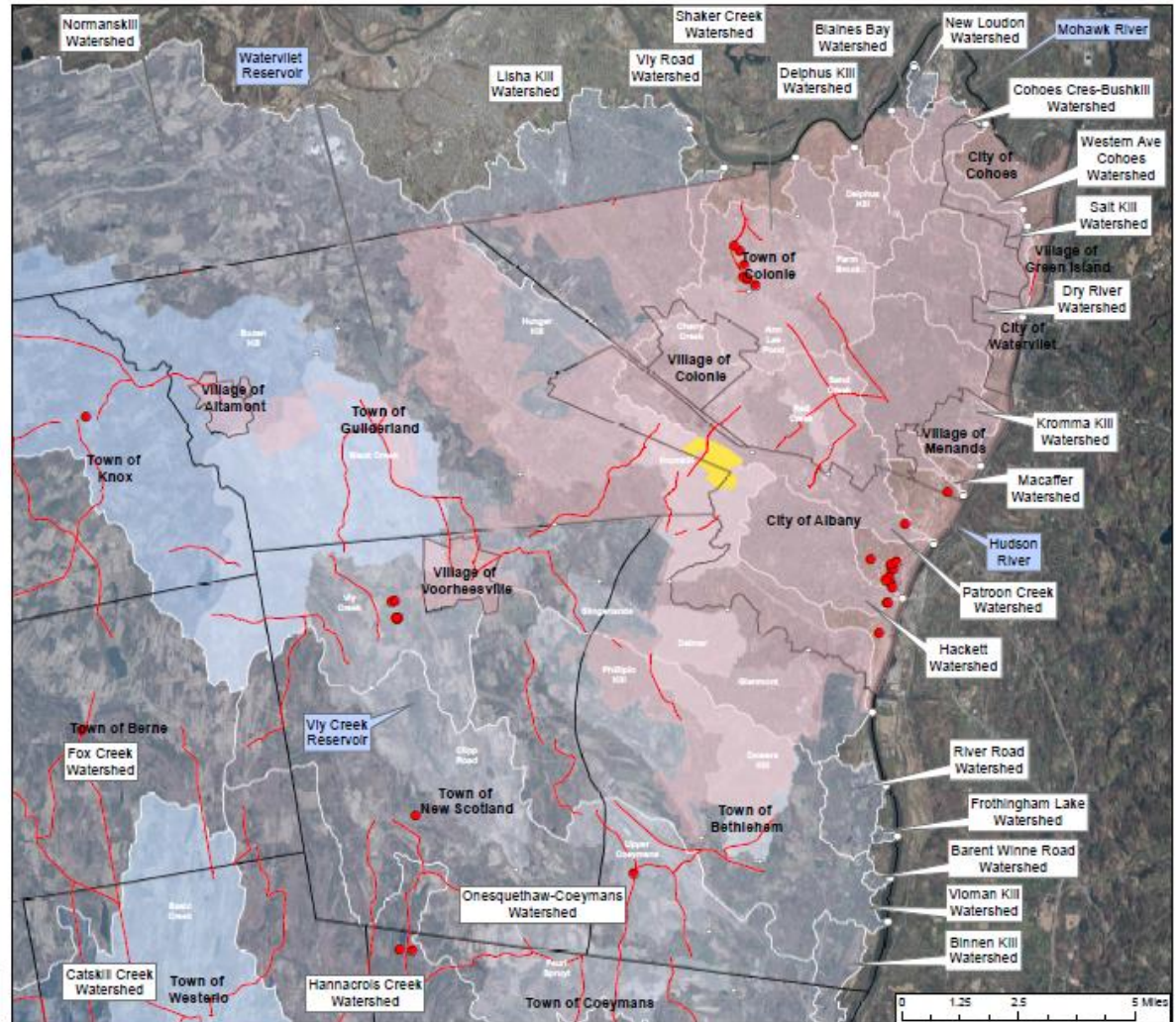
Legend

- Albany County Facilities
- Albany County Roads
- Watershed Delineation Point
- Subwatershed Delineation Point
- Regulated Area (MS4 Permit)
- Municipal Boundaries
- University at Albany Facility-Uptown Campus
- Watersheds

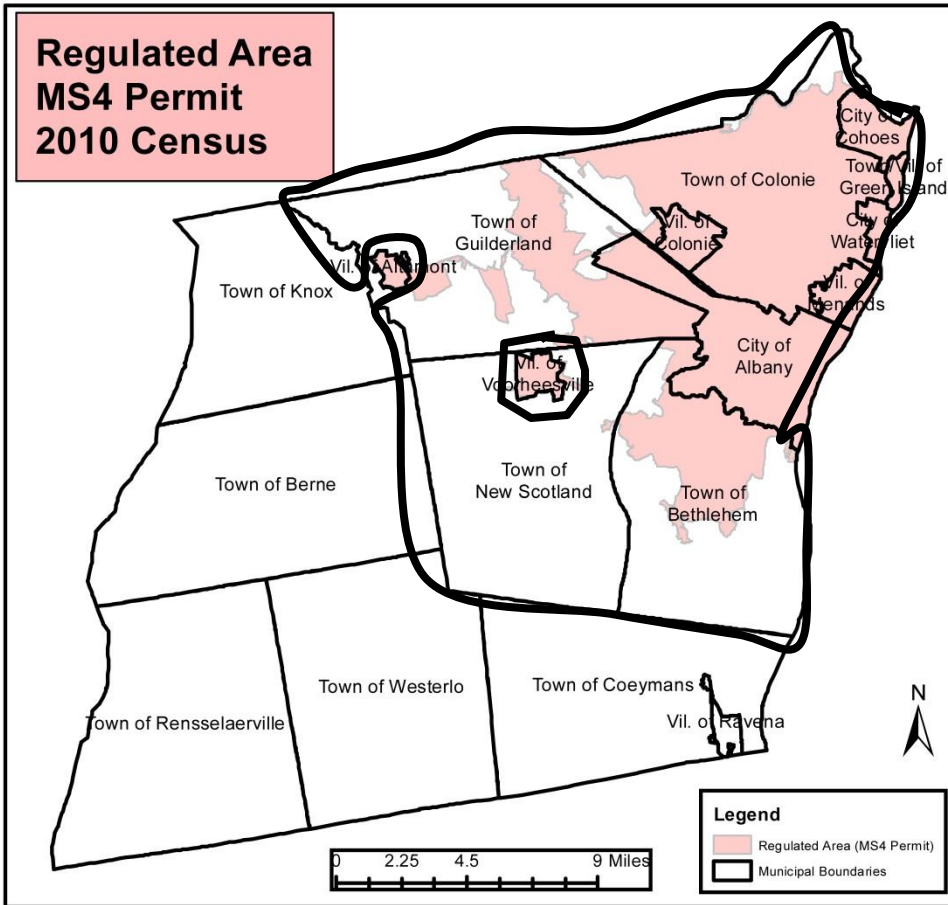


Prepared by the Stormwater Coalition of Albany County
Date: January 2016
File: County&SUNY_29Jan2016_FINAL.mxd

Stormwater Coalition of Albany County
Albany County, City of Albany, Town of Bethlehem, City of Cohoes, Town of Colonie, Village of Colonie, Village of Green Island, Town of Guilderland, Village of Menands, Town of New Scotland, City of Watervliet, University at Albany-SUNY



Stormwater Coalition of Albany County



REGULATED MS4s

Traditional

Cities:

Cohoes (CSO)
 Watervliet (CSO)
 Albany (CSO)

Towns:

Colonie
 Guilderland
 Bethlehem
 New Scotland

Villages:

Colonie
 Green Island (CSO)
 Menands

County:

Albany

Non-Traditional

SUNY-Albany

Public Schools
 NYS DOT
 Thruway Authority

Coalition Members (As of 2016)